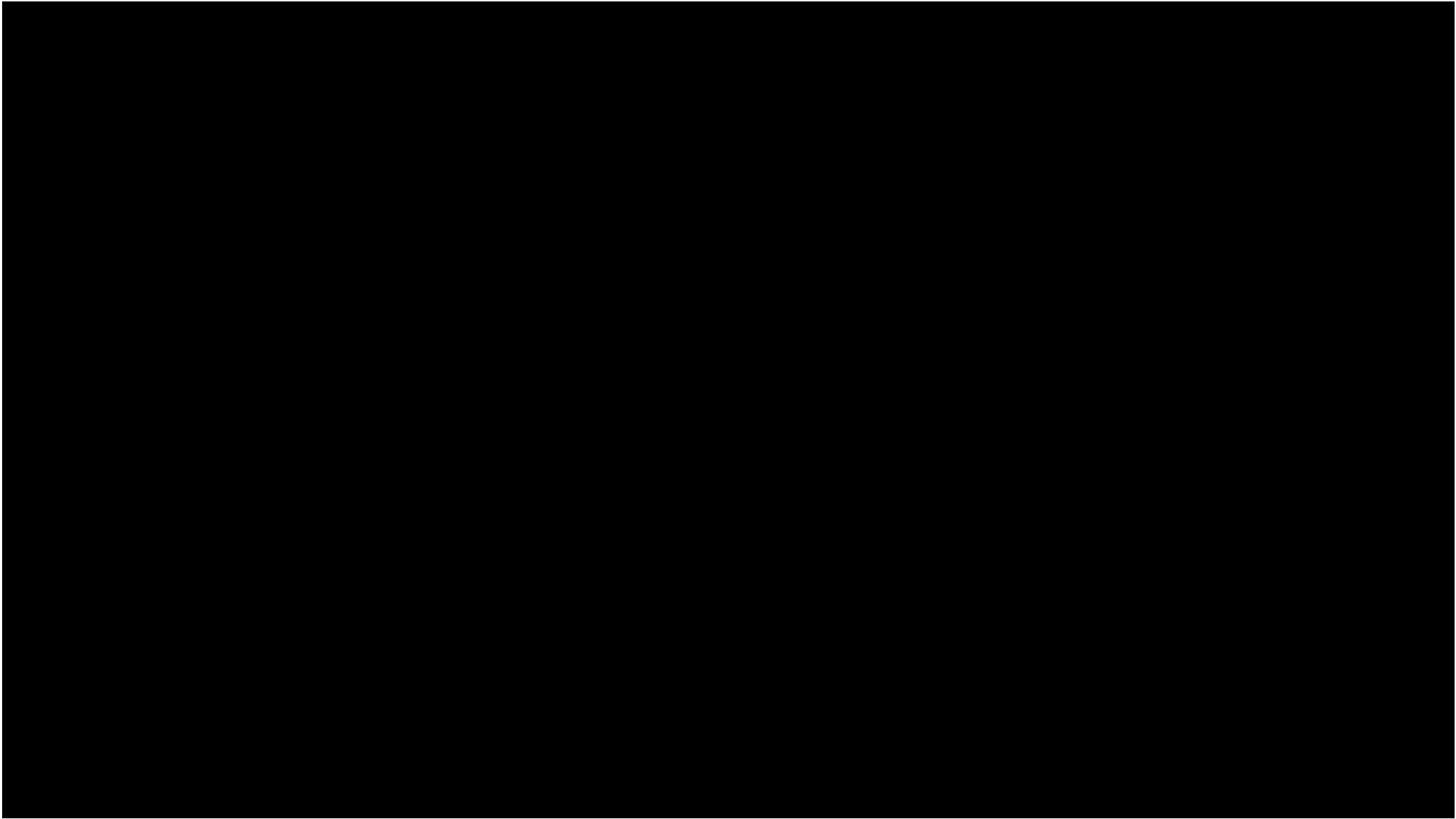


# Sounds of the Changing Tides

*community resilience through music*

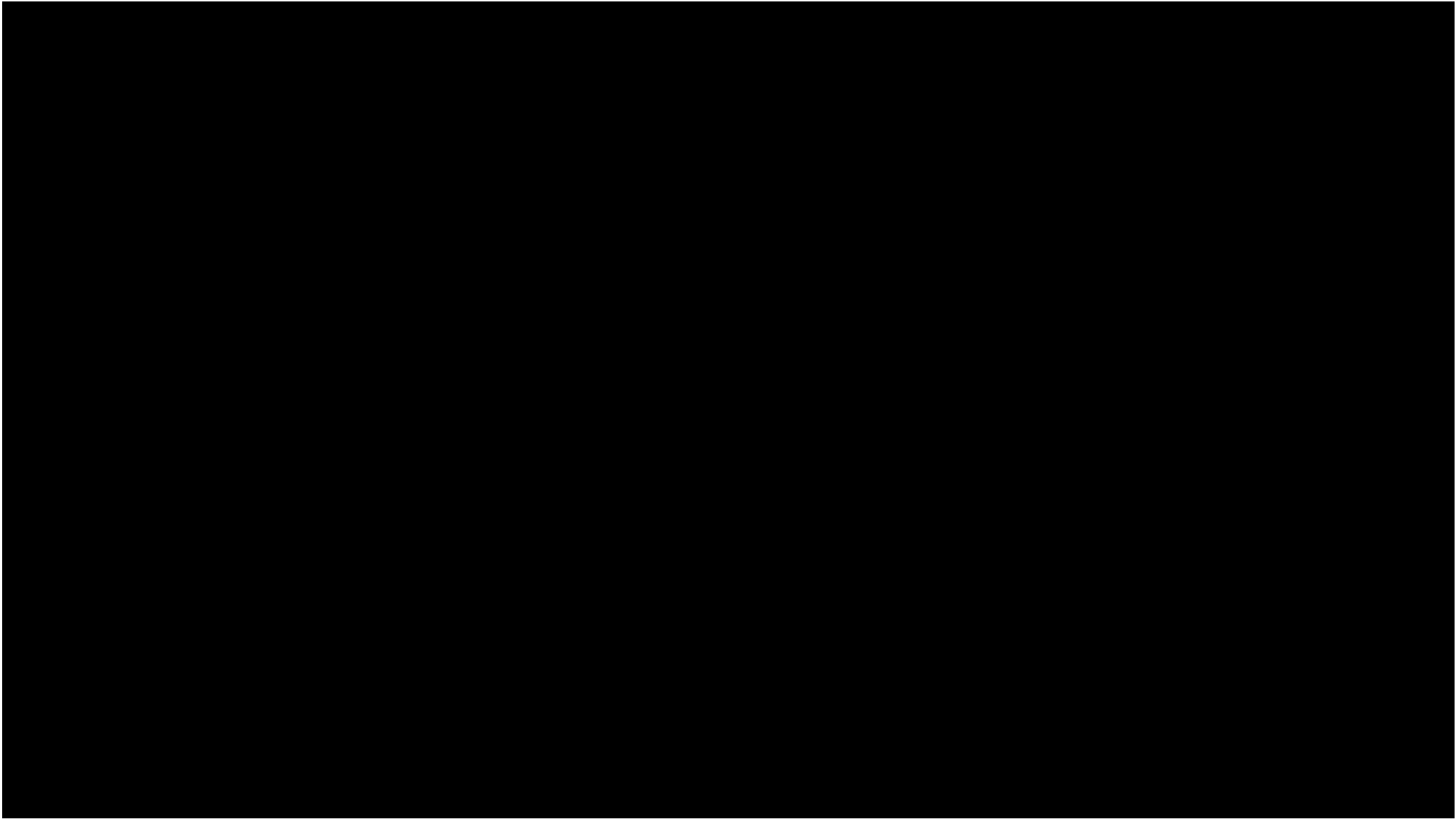
---

Halcyon String Quartet | Gulf of Maine Research Institute



# Goldberg Variation No. 4 - J.S. Bach

composed in 1741 | atmospheric CO<sub>2</sub> concentration is 277 PPM



# Hur var Du i Aftes Så Sildig - Danish Traditional

composed in 2017 | 404 PPM

**Maine and its offshore islands have  
5,000 miles of coastline.**

**If unstretched, this coastline  
would extend from Maine to Hawaii.**

**More than half of Maine's population  
lives on the coast.**

**By 2030, sea levels in Maine will be one foot higher than they were in 2000.**



Sea levels in Maine are likely to rise at least  
4 feet by 2100.

In 2100, our grandchildren will be our age.

**Between now and 2050, more than 20,000 Mainers will lose their jobs due to the impacts of sea level rise.**

**We will have spent \$17.5 billion dollars to repair coastal building damage.**

**Over 300 miles of public roads will be exposed to flooding.**

**Every coastal town in Maine must plan for a future  
where the boundaries between land and sea  
are transient and uncertain.**

# Shore - Fredrik Sjölin

composed in 2017 | 404 PPM

# Goldberg Variation No. 19 - J.S. Bach

composed in 1741 | 277 PPM

**Rockland is located on the coast of Penobscot Bay  
in the heart of Midcoast Maine.**

**North Haven and Vinalhaven islands are located in Penobscot Bay, 12 miles off the coast of Rockland.**

**These three communities flood regularly  
during king tides and storm surges.**

**They are all vulnerable to sea level rise.**



With over 40 businesses, dozens of fishing wharfs, and a ferry terminal, Vinalhaven's downtown was built in a flood zone.

Vinalhaven is considering relocating its downtown.

**Both islands will need to rebuild  
or move their ferry terminals.**

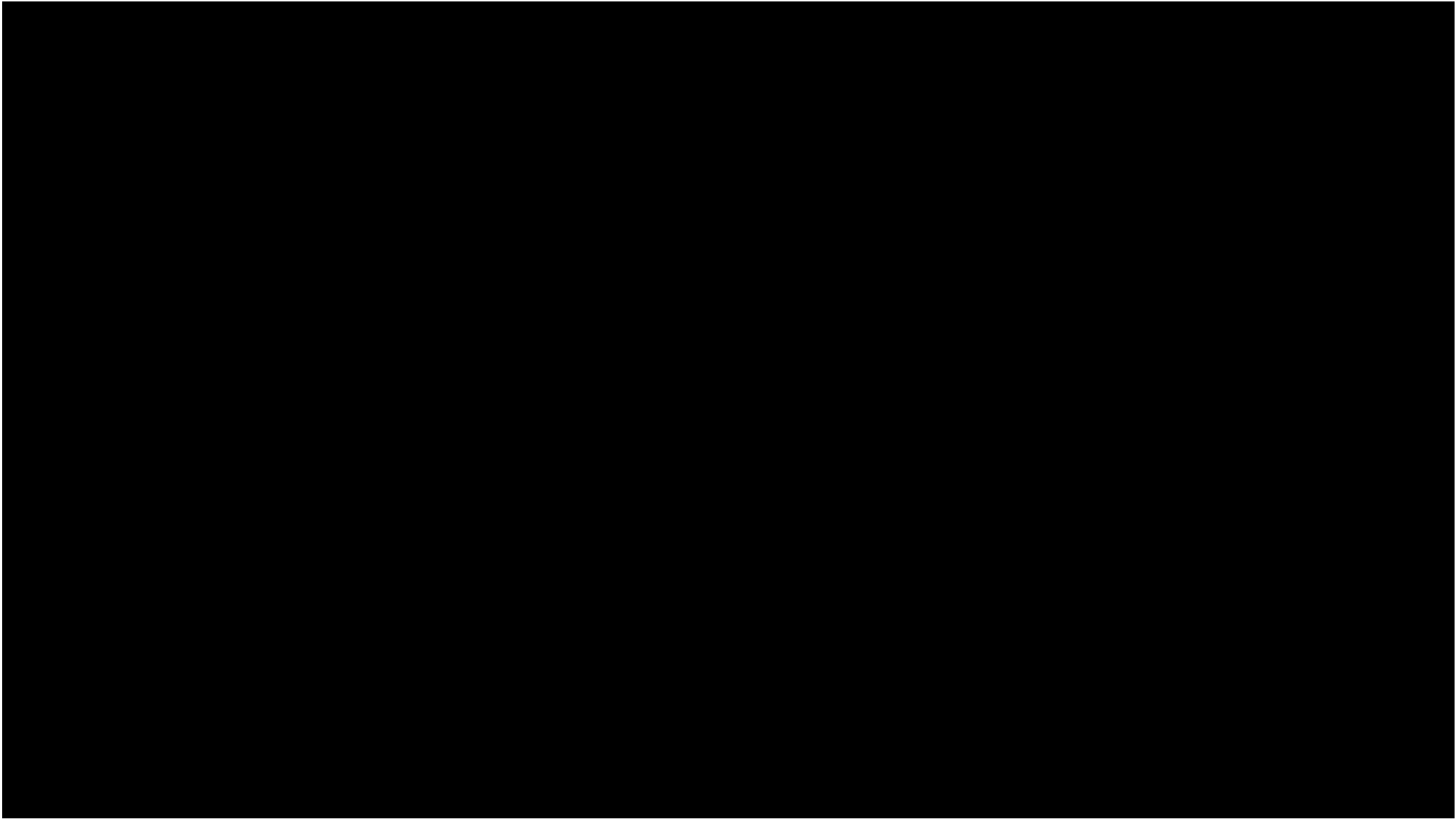
Every year, thousands of people visit the  
Rockland breakwater.

Already, parts of it are submerged at a king tide.

With 4 feet of sea level rise, it will be impassable  
without another layer of granite.

**There are 145 coastal towns in Maine.**

**Every coastal community will experience the  
consequences of rising seas.**



# String Quartet, Op. 11 - S. Barber

*adagio*

composed in 1935 | 309 PPM

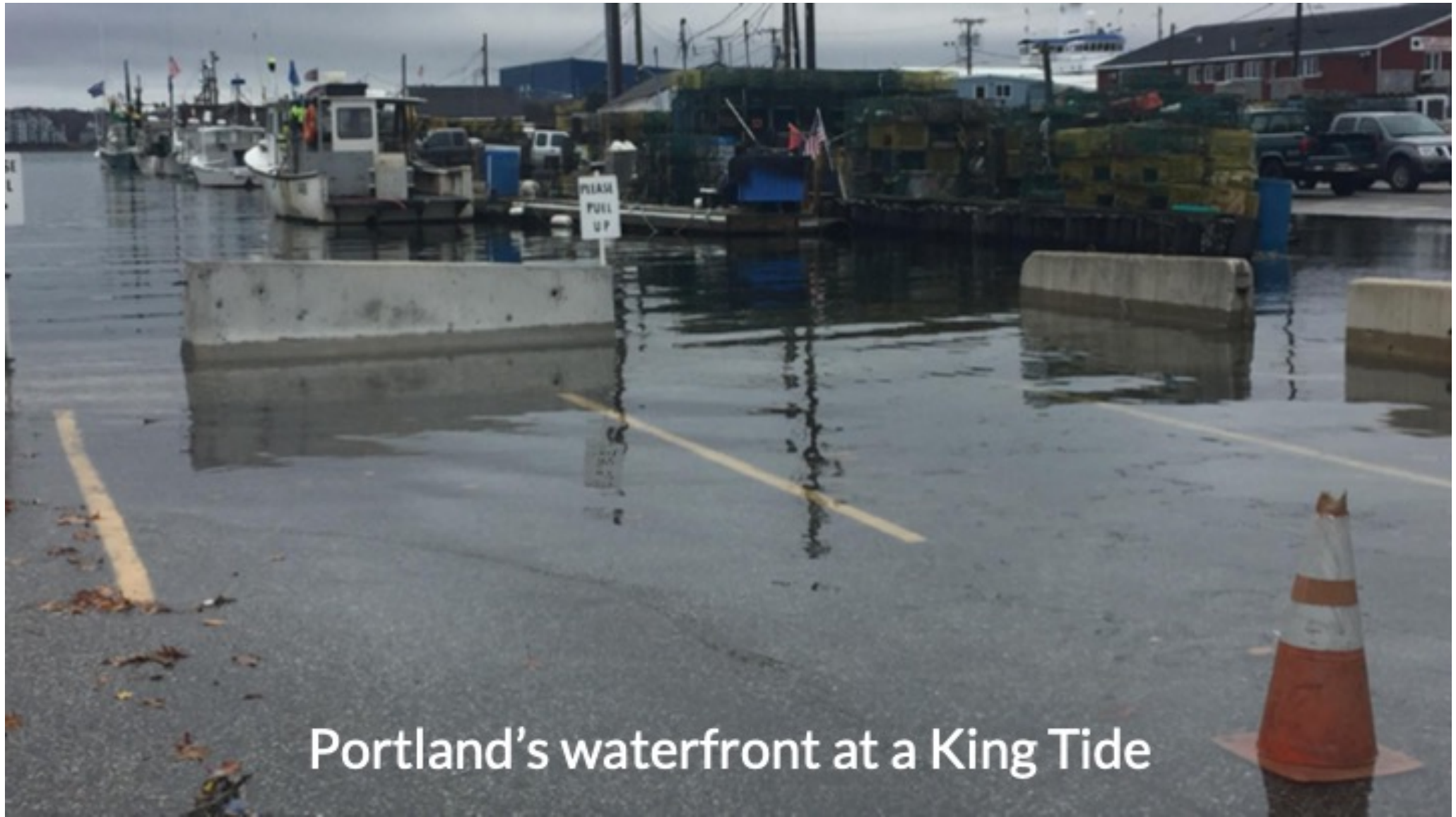
# Goldberg Variation No. 3 - J.S. Bach

composed in 1741 | 277 PPM

Portland's waterfront  
floods regularly at a  
super high tide.

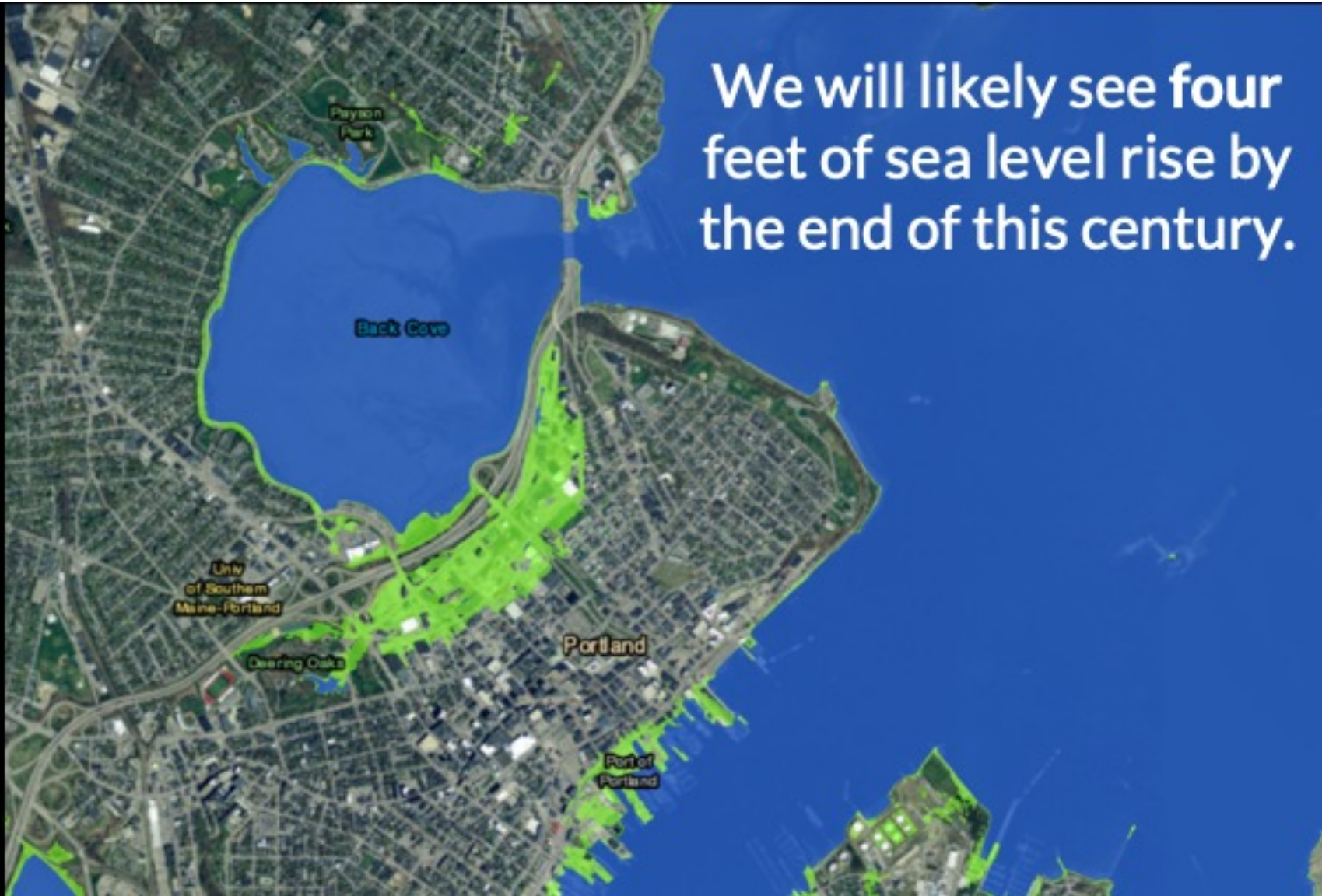






Portland's waterfront at a King Tide

We will likely see **four feet** of sea level rise by the end of this century.



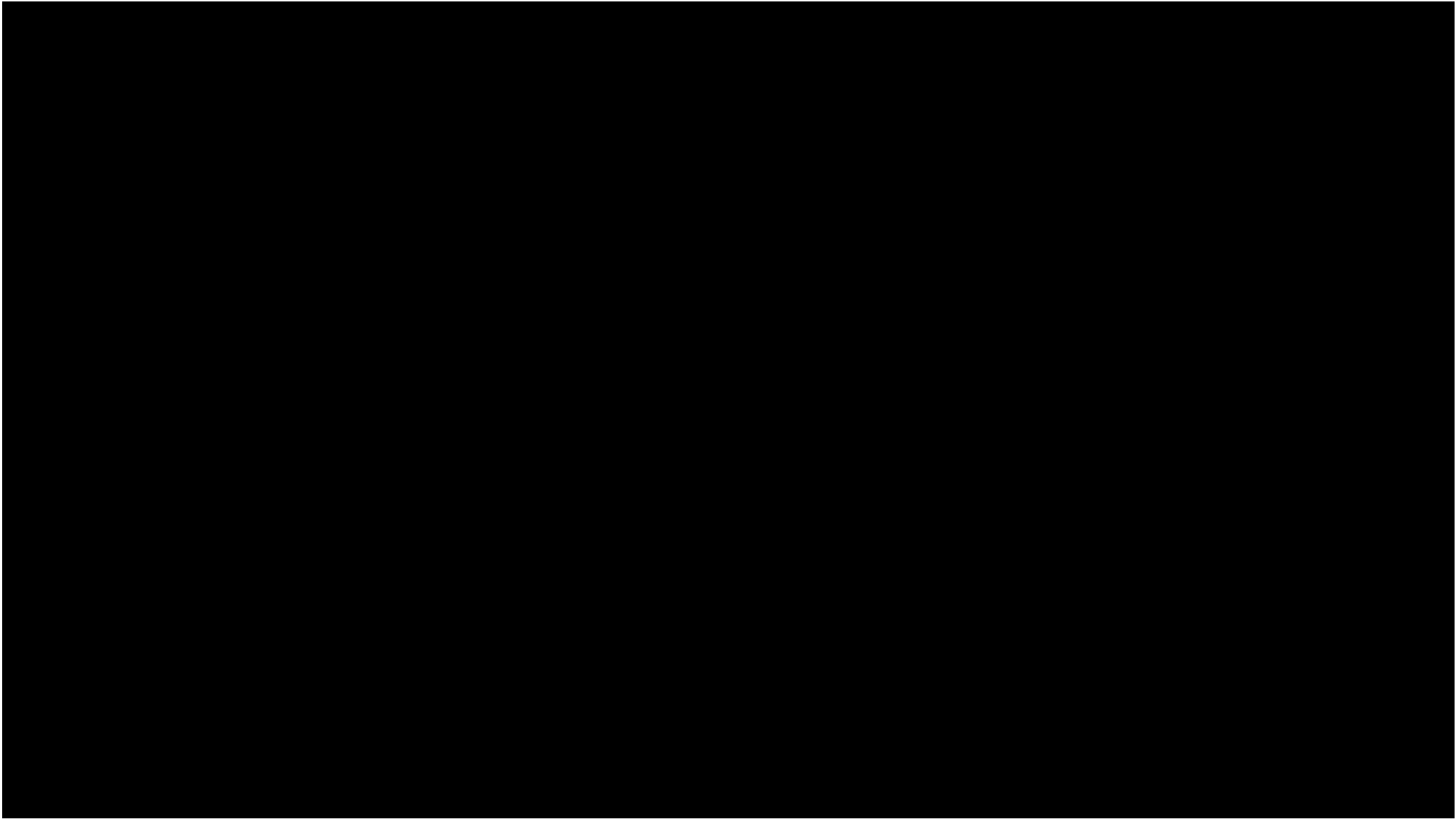


Under the most extreme scenarios, we will experience ten feet of sea level rise by the end of this century.





Portland is planning for a future where the boundaries between land and sea are transient and uncertain.



# Æ Rømeser - Danish Traditional

composed in 2017 | 404 PPM



Portland and South Portland's climate action plan,  
"One Climate Future" outlines OUR future.

**Portland is committed to reducing  
greenhouse gas emissions by 80% by 2050.**

**By 2040, it plans to use 100% clean energy  
for all municipal operations.**

**By 2040, Portland's bus fleet and  
3 of the 5 Casco Bay ferries will be all-electric.**

**Starting in 2026, every newly constructed or fully renovated city building must be built to net-zero standards.**

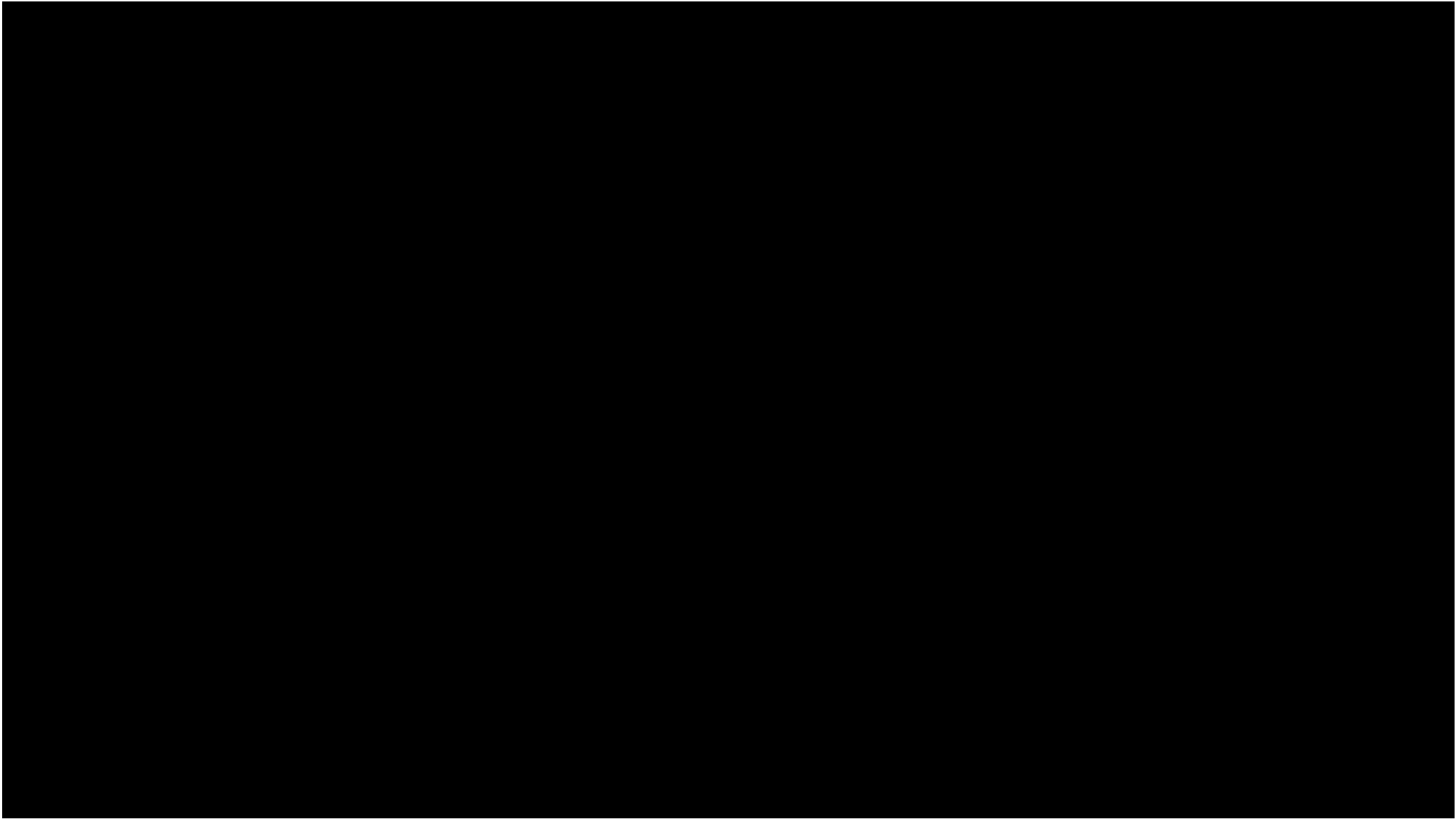
**We do not have time to be pessimistic.**

**We must trust each other.**

**Speak to each other.**

**Be compassionate.**

**Take one step at a time.**



# SOURCES

About the Gulf of Maine. Gulf of Maine Council on the Marine Environment. Accessed June, 2022. <https://www.gulfofmaine.org/public/gulf-of-maine-council-on-the-marine-environment/about-the-gulf-of-maine/>

Balch, W. M., Drapeau, D. T., Bowler, B. C., Record, N. R., Bates, N. R., Pinkham, S., et al. (2022). Changing hydrographic, biogeochemical, and acidification properties in the Gulf of Maine as measured by the Gulf of Maine North Atlantic Time Series, GNATS, between 1998 and 2018. *Journal of Geophysical Research: Biogeosciences*, 127, e2022JG006790. <https://doi.org/10.1029/2022JG006790>

Bigelow, H.B., and W.C. Schroeder. (1953) *Fishes of the Gulf of Maine*. First Revision. The Blackburn Press. p.113-118.

Bittel, J. See the *Microscopic World of Plankton in Stunning Detail* (2021). National Geographic. Accessed June, 2022. <https://www.nationalgeographic.com/animals/article/microscopic-plankton-revealed-in-stunning-detail>

Maine Geological Survey, 2020, Sea Level Rise/Storm Surge. [https://www.maine.gov/dacf/mgs/hazards/slr\\_ss/index.shtml](https://www.maine.gov/dacf/mgs/hazards/slr_ss/index.shtml). Accessed July 5, 2022.

Poppick, L. (2018). Why is the Gulf of Maine warming faster than 99% of the ocean? *Eos*, 99. <https://doi.org/10.1029/2018EO109467>

Sea Level Rise in Maine: An Accelerating Problem. Governor's Office of Policy, Innovation, and the Future. Accessed July 5, 2022. [https://www.maine.gov/future/sites/maine.gov/future/files/2021-05/GOPIF\\_SLR\\_Factsheet\\_2021\\_05\\_06.pdf](https://www.maine.gov/future/sites/maine.gov/future/files/2021-05/GOPIF_SLR_Factsheet_2021_05_06.pdf)

[https://www.oneclimatefuture.org/wp-content/uploads/2020/02/12\\_Vulnerability\\_Assessment\\_Fact\\_Sheet.pdf](https://www.oneclimatefuture.org/wp-content/uploads/2020/02/12_Vulnerability_Assessment_Fact_Sheet.pdf)

<https://www.mainepublic.org/environment-and-outdoors/2021-07-14/portland-is-a-heat-island-and-its-only-getting-hotter>

<https://www.oneclimatefuture.org/progress/portland-progress-be/portland-progress-tlu/>

<https://portlandmaine.gov/577/Climate-Action>

<https://storymaps.arcgis.com/stories/be4a2a7e272749428fa8bdcd083d3789>